

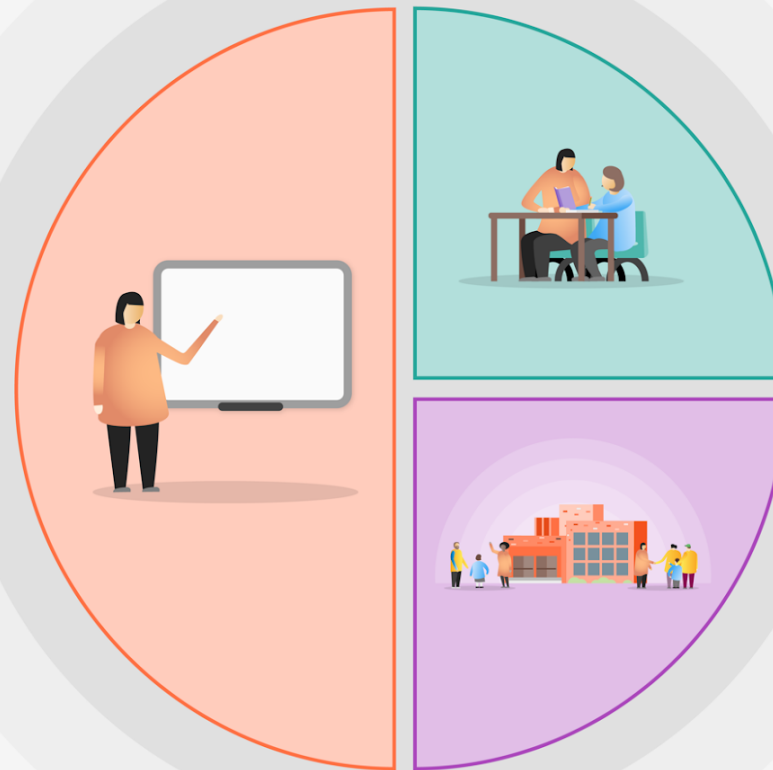
1 Teaching

- ~ Quality First Teaching supported by evidence informed CPD for teachers and support staff.
- ~ A broad and engaging curriculum that focuses on vocabulary acquisition.
- ~ Facilitation of 6 classes across year 3 and 2 with support from additional teaching assistant and intervention teacher
- ~ Facilitation of 4 classes for year 6 (am)
- ~ Curriculum 'essentials' for Reading, Writing and Maths are identified and taught / revisited across wider curriculum subjects.
- ~ Careful planning and differentiation to meet the individual needs of ALL SEND pupils.
- ~ Whole – school writing approach underpinned by The Power of Reading.
- ~ Further development of Maths Mastery approach – with additional focus on feedback.
- ~ Discrete focus on bringing curriculum into reading and writing to accelerate progress.

Total recovery funding 2021/22

EINA: £15,588

LGJA: £26,245



2 Targeted academic support

- ~ Additional Chromebooks to support children at home and in school
- ~ Additional Lexia Licenses
- ~ Maths Whizz intervention programme
- ~ Year 6 and 2 interventions with qualified teacher
- ~ A full program, for all year groups, of specific interventions
- ~ Same-day interventions across the academy
- ~ Continue to collaborate with RWI including year 3
- ~ Writing recovery programme led by Expert Practitioner and English leader

3 Wider strategies

- ~ Nurture breakfast for all
- ~ Parent Support Advisors appointed to support families and raise attendance
- ~ Play Therapy
- ~ Dedicated Care Team to provide SEMH intervention including Sensory Circuits, Managing Big Emotions etc
- ~ Whole school physical environment planned with safe spaces.
- ~ Development of 'Bee Well' identifying emotions and self- regulation strategies.